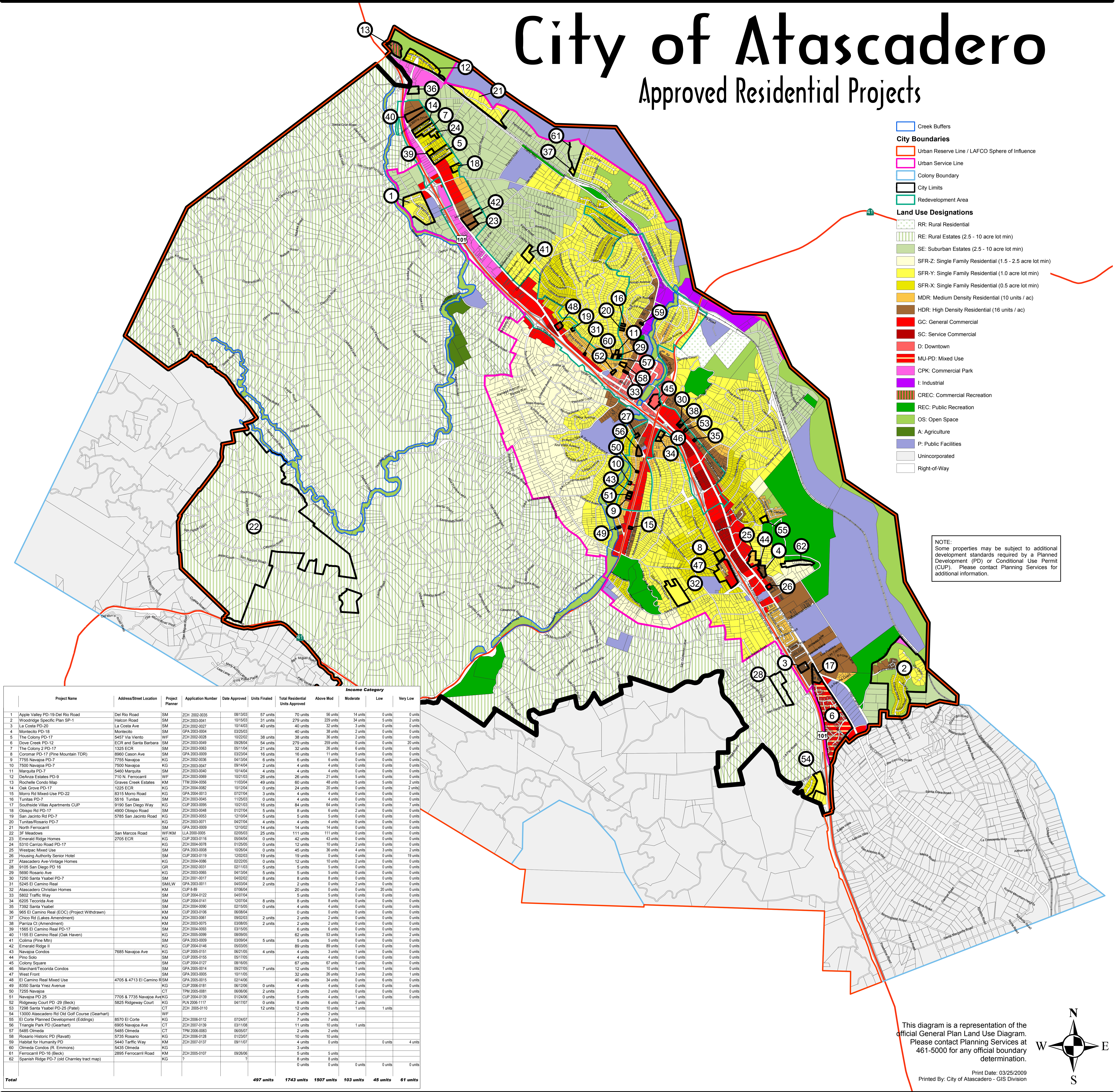


City of Atascadero

Approved Residential Projects



- Creek Buffers
- City Boundaries**
 - Urban Reserve Line / LAFCO Sphere of Influence
 - Urban Service Line
 - Colony Boundary
 - City Limits
 - Redevelopment Area
- Land Use Designations**
 - RR: Rural Residential
 - RE: Rural Estates (2.5 - 10 acre lot min)
 - SE: Suburban Estates (2.5 - 10 acre lot min)
 - SFR-Z: Single Family Residential (1.5 - 2.5 acre lot min)
 - SFR-Y: Single Family Residential (1.0 acre lot min)
 - SFR-X: Single Family Residential (0.5 acre lot min)
 - MDR: Medium Density Residential (10 units / ac)
 - HDR: High Density Residential (16 units / ac)
 - GC: General Commercial
 - SC: Service Commercial
 - D: Downtown
 - MU-PD: Mixed Use
 - CPK: Commercial Park
 - I: Industrial
 - CREC: Commercial Recreation
 - REC: Public Recreation
 - OS: Open Space
 - A: Agriculture
 - P: Public Facilities
 - Unincorporated
 - Right-of-Way

NOTE:
Some properties may be subject to additional development standards required by a Planned Development (PD) or Conditional Use Permit (CUP). Please contact Planning Services for additional information.

Project Name	Address/Street Location	Project Planner	Application Number	Date Approved	Units Finalized	Income Category				
						Total Residential Units Approved	Above Mod	Moderate	Low	Very Low
1 Apple Valley PD-19-Diel Rio Road	Diel Rio Road	SM	ZCH 2002-0035	08/13/03	57 units	70 units	56 units	14 units	0 units	0 units
2 Woodridge Specific Plan SP-1	Halcon Road	SM	ZCH 2003-0041	10/15/03	31 units	279 units	229 units	34 units	5 units	2 units
3 La Costa PD-20	La Costa Ave	SM	ZCH 2002-0027	10/14/03	40 units	40 units	32 units	3 units	0 units	0 units
4 Montecito PD-18	Montecito	SM	GPA 2003-0004	03/25/03	40 units	40 units	38 units	2 units	0 units	0 units
5 The Colony PD-17	5457 Via Viento	WF	ZCH 2002-0028	10/22/02	38 units	38 units	36 units	2 units	0 units	0 units
6 Dove Creek PD-12	ECR and Santa Barbara	SM	ZCH 2003-0069	09/29/04	54 units	279 units	259 units	0 units	20 units	0 units
7 The Colony 2 PD-17	1325 ECR	SM	ZCH 2003-0063	05/11/04	21 units	32 units	26 units	6 units	0 units	0 units
8 Coromar PD-17 (Pine Mountain TDR)	8960 Cason Ave	SM	GPA 2003-0009	03/23/04	16 units	16 units	11 units	5 units	0 units	0 units
9 7755 Navajoa PD-7	7755 Navajoa	KG	ZCH 2002-0036	04/13/04	6 units	6 units	6 units	0 units	0 units	0 units
10 7500 Navajoa PD-7	7500 Navajoa	KG	ZCH 2003-0047	09/14/04	2 units	4 units	4 units	0 units	0 units	0 units
11 Marquita PD-7	6460 Marquita	SM	ZCH 2003-0060	10/14/04	4 units	4 units	4 units	0 units	0 units	0 units
12 DeAnza Estates PD-9	710 N. Ferrocarril	WF	ZCH 2003-0069	10/21/03	26 units	26 units	21 units	5 units	0 units	0 units
13 Rochelle Condo Map	Graves Creek Estates	KM	TTM 2004-0056	11/03/04	49 units	60 units	48 units	5 units	5 units	2 units
14 Oak Grove PD-17	1225 ECR	KG	ZCH 2004-0082	10/12/04	0 units	24 units	20 units	0 units	0 units	2 units
15 Marro Rd Mixed-Use PD-22	8315 Marro Road	KG	GPA 2004-0013	07/27/04	3 units	4 units	4 units	0 units	0 units	0 units
16 Tunilas PD-7	5516 Tunilas	SM	ZCH 2003-0045	11/25/03	0 units	4 units	4 units	0 units	0 units	0 units
17 Southside Villas Apartments CUP	9190 San Diego Way	KG	CUP 2003-0095	10/21/03	16 units	84 units	64 units	0 units	0 units	7 units
18 Obispo Rd PD-17	4900 Obispo Road	SM	ZCH 2003-0048	01/27/04	5 units	8 units	6 units	2 units	0 units	0 units
19 San Jacinto Rd PD-7	5785 San Jacinto Road	KG	ZCH 2003-0053	12/10/04	5 units	5 units	5 units	0 units	0 units	0 units
20 Tunilas/Rosario PD-7		KG	ZCH 2003-0071	04/27/04	4 units	4 units	4 units	0 units	0 units	0 units
21 North Ferrocarril		SM	GPA 2003-0009	12/10/02	14 units	14 units	14 units	0 units	0 units	0 units
22 3F Meadows	San Marcos Road	WFKM	LIA 2000-0005	02/05/03	26 units	111 units	111 units	0 units	0 units	0 units
23 Emerald Ridge Homes	2705 ECR	KG	CUP 2003-0116	05/04/04	0 units	42 units	43 units	0 units	0 units	0 units
24 6310 Camino Road PD-17		KG	ZCH 2004-0078	01/23/05	0 units	12 units	10 units	2 units	0 units	0 units
25 Westpac Mixed Use		SM	GPA 2003-0008	10/26/04	0 units	45 units	35 units	4 units	3 units	2 units
26 Housing Authority Senior Hotel		SM	CUP 2003-0119	12/02/03	19 units	0 units	0 units	0 units	19 units	0 units
27 Atascadero Ave-Vintage Homes		KG	ZCH 2004-0086	02/22/05	0 units	12 units	10 units	2 units	0 units	0 units
28 9105 San Diego PD 18		GR	ZCH 2003-0031	02/11/03	5 units	5 units	5 units	0 units	0 units	0 units
29 6500 Rosano Ave		SM	ZCH 2003-0065	04/13/04	5 units	5 units	5 units	0 units	0 units	0 units
30 7250 Santa Ysabel PD-7		SM	ZCH 2001-0017	04/02/02	8 units	8 units	8 units	0 units	0 units	0 units
31 6245 El Camino Real		SM/LW	GPA 2003-0011	04/03/04	2 units	2 units	0 units	2 units	0 units	0 units
32 Atascadero Christian Homes		KM	CUP 8-88	07/06/04	20 units	0 units	0 units	20 units	0 units	0 units
33 6802 Traffic Way		SM	CUP 2004-0122	04/07/04	5 units	5 units	5 units	0 units	0 units	0 units
34 6205 Teconora Ave		SM	CUP 2004-0141	12/07/04	8 units	8 units	8 units	0 units	0 units	0 units
35 7302 Santa Ysabel		SM	ZCH 2004-0090	02/15/05	0 units	4 units	4 units	0 units	0 units	0 units
36 965 El Camino Real (EOC) (Project Withdrawn)		KM	CUP 2003-0106	06/08/04	0 units	0 units	0 units	0 units	0 units	0 units
37 Chico Rd (Lakes Amendment)		KM	ZCH 2003-0061	09/03/03	2 units	2 units	2 units	0 units	0 units	0 units
38 Parriza Ct (Amendment)		KM	ZCH 2003-0075	03/05/05	2 units	2 units	2 units	0 units	0 units	0 units
39 1565 El Camino Real PD-17		SM	ZCH 2004-0093	03/15/05	6 units	6 units	6 units	0 units	0 units	0 units
40 1155 El Camino Real (Oak Haven)		KG	ZCH 2006-0099	08/09/05	62 units	53 units	53 units	5 units	2 units	2 units
41 Colima (Pine Mtn)		SM	GPA 2003-0009	03/09/04	5 units	5 units	5 units	0 units	0 units	0 units
42 Emerald Ridge II		KG	CUP 2004-0146	05/03/05	89 units	89 units	89 units	0 units	0 units	0 units
43 Navajoa Condos	7685 Navajoa Ave	KG	CUP 2005-0151	06/21/05	4 units	4 units	3 units	1 units	0 units	0 units
44 Pino Solo		SM	CUP 2006-0155	05/17/05	4 units	4 units	4 units	0 units	0 units	0 units
45 Colony Square		SM	CUP 2004-0127	08/16/05	67 units	67 units	67 units	0 units	0 units	0 units
46 Marchant/Teconora Condos		SM	GPA 2005-0014	09/02/05	7 units	12 units	10 units	1 units	0 units	0 units
47 West Front		SM	GPA 2003-0005	10/11/05	32 units	28 units	3 units	0 units	2 units	1 units
48 El Camino Real Mixed Use	4705 & 4713 El Camino	SM	GPA 2005-0015	02/14/06	40 units	34 units	0 units	6 units	0 units	0 units
49 8350 Santa Ynez Avenue		KG	CUP 2006-0181	06/12/06	0 units	4 units	4 units	0 units	0 units	0 units
50 7255 Navajoa		CT	TPM 2005-0081	05/06/06	2 units	2 units	2 units	0 units	0 units	0 units
51 Navajoa PD 25	7705 & 7725 Navajoa Ave	KG	CUP 2004-0139	01/23/06	0 units	5 units	4 units	1 units	0 units	0 units
52 Ridgeway Court PD -29 (Beck)	5825 Ridgeway Court	KG	PLN 2006-1117	04/17/07	0 units	8 units	6 units	2 units	0 units	0 units
53 7298 Santa Ysabel PD-26 (Pate)		CT	ZCH 2005-0110		12 units	12 units	10 units	1 units	1 units	0 units
54 13000 Atascadero Rd Old Golf Course (Gearhart)		WF			2 units	2 units	2 units	0 units	0 units	0 units
55 El Corte Planned Development (Edgings)	6570 El Corte	KG	ZCH 2006-0112	07/24/07	7 units	7 units	7 units	0 units	0 units	0 units
56 Triangle Park PD (Gearhart)	6905 Navajoa Ave	CT	ZCH 2007-0138	03/11/08	11 units	10 units	1 units	0 units	0 units	0 units
57 5485 Omeda		CT	TPM 2006-0083	06/05/07	2 units	2 units	2 units	0 units	0 units	0 units
58 Rosano Historic PD (Rawatt)	5735 Rosano	KG	ZCH 2006-0128	01/23/07	10 units	10 units	10 units	0 units	0 units	0 units
59 Habitat for Humanity PD	5440 Traffic Way	KM	ZCH 2007-0137	09/11/07	4 units	4 units	4 units	0 units	4 units	0 units
60 Omeda Condos (R. Emmons)	6435 Omeda	KG			3 units	3 units	3 units	0 units	0 units	0 units
61 Ferrocarril PD-18 (Beck)	2895 Ferrocarril Road	KM	ZCH 2005-0107	09/26/06	5 units	5 units	5 units	0 units	0 units	0 units
62 Spanish Ridge PD-7 (old Chamley tract map)		KG	?	?	8 units	8 units	8 units	0 units	0 units	0 units
Total					497 units	1743 units	1507 units	103 units	45 units	61 units

This diagram is a representation of the official General Plan Land Use Diagram. Please contact Planning Services at 461-5000 for any official boundary determination.

